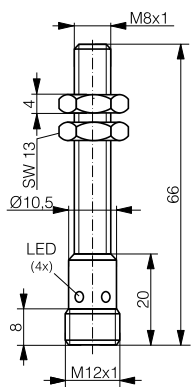
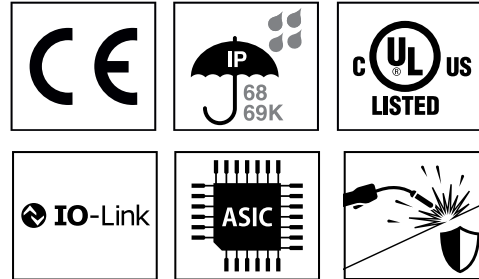
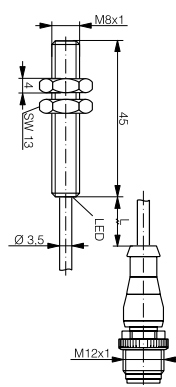


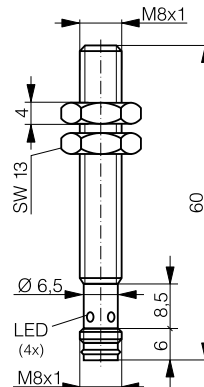
HOUSING	OPERATING DISTANCE	MOUNTING	✓ Anti-spatter coating	✓ Robust full-metal sensor, impact resistant
M8	3 mm	Embeddable	✓ Magnetic-field immunity: medium frequency ≤ 15 kA 50 Hz fields ≤ 40 mT	✓ Long operating distance ✓ Factor 1 on Fe and Al



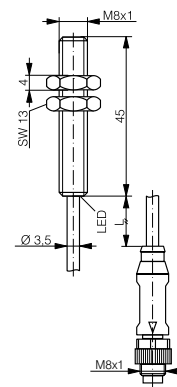
DW-AS-70x-M8-6xx



DW-AV-70x-M8-6xx



DW-AS-70x-M8-6x3



DW-AV-703-M8-698

DETECTION DATA		INTERFACE	
Rated operating distance (S_n)	3 mm	Indicator LED, yellow	Sensing state ($0 \leq s \leq S_n$)
Assured operating distance (S_a)	$\leq (0.81 \times S_n)$ mm	IO-Link	✓
Repeat accuracy	≤ 0.15 mm	MTTF (@40°C)	1017 y
Hysteresis	$3\% S_r \leq \text{Hyst} \leq 15\% S_r$		
Temperature drift	$\leq 10\% S_r$		
Standard target	9 x 9 x 1 mm ³ , FE360		

Note: $0.9S_n \leq S_a \leq 1.1S_n$.

ELECTRICAL DATA		MECHANICAL DATA	
Supply voltage range (U_B)	10...30 VDC	Mounting	Embeddable
Residual ripple	$\leq 20\% U_B$	Housing material	V2A / 1.4305 / AISI 303 (+ coating)
Output current	≤ 200 mA	Sensing face material	V2A / 1.4305 / AISI 303 (+ coating)
Output voltage drop	≤ 2.0 VDC	Max tightening torque	8 Nm
Power consumption (no-load)	≤ 10 mA	Ambient operating temperature	-25...+85°C ¹
Residual current	≤ 0.1 mA	Enclosure rating	IP68 / IP69K
Switching frequency	≤ 15 Hz	Weight (cable/connector)	see page 2
Short-circuit protection	✓	Cable minimum bendind radius	moving: 15 x D; Fixed: 10 x D
Voltage reversal protection	✓	Shock and vibration	IEC 60947-5-2
Cable length max.	≤ 300 m		

¹Maximum temperature according to UL: 70°C.

Note: all data measured according to IEC 60947-5-2 standard with $U_B=20 \dots 30$ VDC, $T_A=23^\circ\text{C} \pm 5^\circ\text{C}$.

CORRECTION FACTORS FOR TARGET OF

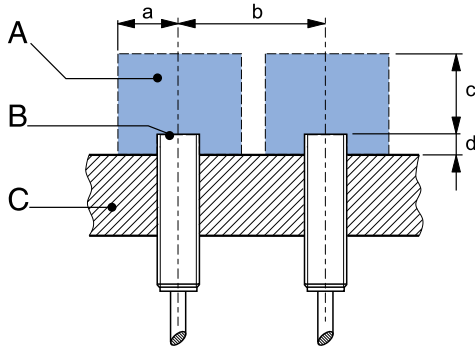
Steel FE 360	1	Copper	1	Aluminum	1	Brass	1.3	Stainless Steel V2A 1/2 mm	0.4 / 0.7
--------------	---	--------	---	----------	---	-------	-----	----------------------------	-----------

CORRECTION FACTORS FOR EMBEDDABLE MOUNTING IN SUPPORT OF

Steel FE 360	0.75	Aluminum	0.9	Brass	0.75	Stainless Steel V2A	0.8
--------------	------	----------	-----	-------	------	---------------------	-----

Note: the operating distance of the sensor must be multiplied by the correction factor of the material. For example, the operating distance on Aluminum is $S_{n,Al} = S_n \times CF_{Al}$. In case of embeddable mounting, the distance is multiplied by the additional correction factor of the support, thus $S_{n,Al} = S_n \times CF_{Al} \times CF_{emb,Al}$.

INSTALLATION CONDITIONS



A : metal free zone a : 6 mm d : steel 0mm
 B : sensing face b : 22 mm
 C : support c : 9 mm

Note: additional installation information can be found in the glossary of the Contrinex General Catalog.

IO-LINK FUNCTIONALITIES

IO-Link version	1.1
SIO mode	Supported
Process data	7-bit input
Baudrate	COM2 (38.4 kBaud)
Minimum cycle time	10.4 ms
ISDU	Not supported



IODD files may be downloaded from

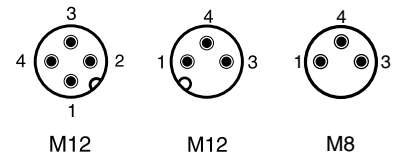
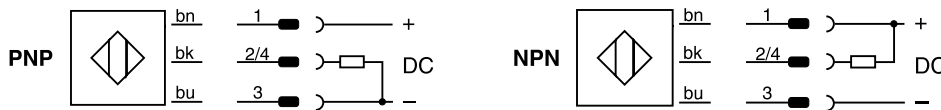
www.contrinex.com/product-range/inductive-sensors/.

Select the product name to display the product page with corresponding downloads.

Alternatively, just click/scan the QR code on the left.

WIRING DIAGRAM

PIN ASSIGNMENT



AVAILABLE TYPES

UNCOATED

Part number	Part reference	Old ref.	Polarity	Connection	Output on pin 2	Output on pin 4 / bk	Weight
330-320-159	DW-AS-703-M8-673	xxx-694	PNP	M12 4-pin	-	Normally open (NO) / IO-Link	17 g
320-420-777	DW-AV-701-M8-673	xxx-695	NPN	PUR, 0.2 m + M12 3-pin	-	Normally open (NO)	23 g
330-320-154	DW-AV-703-M8-673	xxx-695	PNP	PUR, 0.2 m + M12 3-pin	-	Normally open (NO) / IO-Link	23 g
330-320-147	DW-AS-703-M8-698	xxx-673	PNP	M8 3-pin	-	Normally open (NO) / IO-Link	15 g
330-320-188	DW-AV-703-M8-698	xxx-692	PNP	PUR, 0.2 m + M8 3-pin	-	Normally open (NO) / IO-Link	23 g
320-420-761	DW-AV-701-M8-698	xxx-692	NPN	PUR, 0.2 m + M8 3-pin	-	Normally open (NO)	23 g
330-320-211	DW-AS-701-M8-673	-	NPN	M12 4-pin	-	Normally open (NO)	17 g
330-320-218	DW-AS-701-M8-698	-	NPN	M8 3-pin	-	Normally open (NO)	17 g

COATED

Part number	Part reference	Old ref.	Polarity	Connection	Output on pin 2	Output on pin 4 / bk	Weight
330-320-160	DW-AS-703-M8-697	-	PNP	M12 4-pin	-	Normally open (NO) / IO-Link	17 g
320-420-778	DW-AV-701-M8-693	xxx-696	NPN	PUR, 0.2 m + M12 3-pin	-	Normally open (NO)	23 g
330-320-164	DW-AV-703-M8-693	xxx-696	PNP	PUR, 0.2 m + M12 3-pin	-	Normally open (NO) / IO-Link	23 g
330-320-180	DW-AS-703-M8-693	-	PNP	M8 3-pin	-	Normally open (NO) / IO-Link	15 g
330-320-212	DW-AS-701-M8-693	-	NPN	M8 3-pin	-	Normally open (NO)	17 g
330-320-217	DW-AS-701-M8-697	-	NPN	M12 4-pin	-	Normally open (NO)	17 g

Note: part reference may include additional suffix to indicate a revision version or special version. Further information is available on request.

Operators of the products we supply are responsible for compliance with measures for the protection of persons. The use of our equipment in applications where the safety of persons might be at risk is only authorized if the operator observes and implements separate, appropriate and necessary measures for the protection of persons and machines. Terms of delivery and rights to change design reserved.